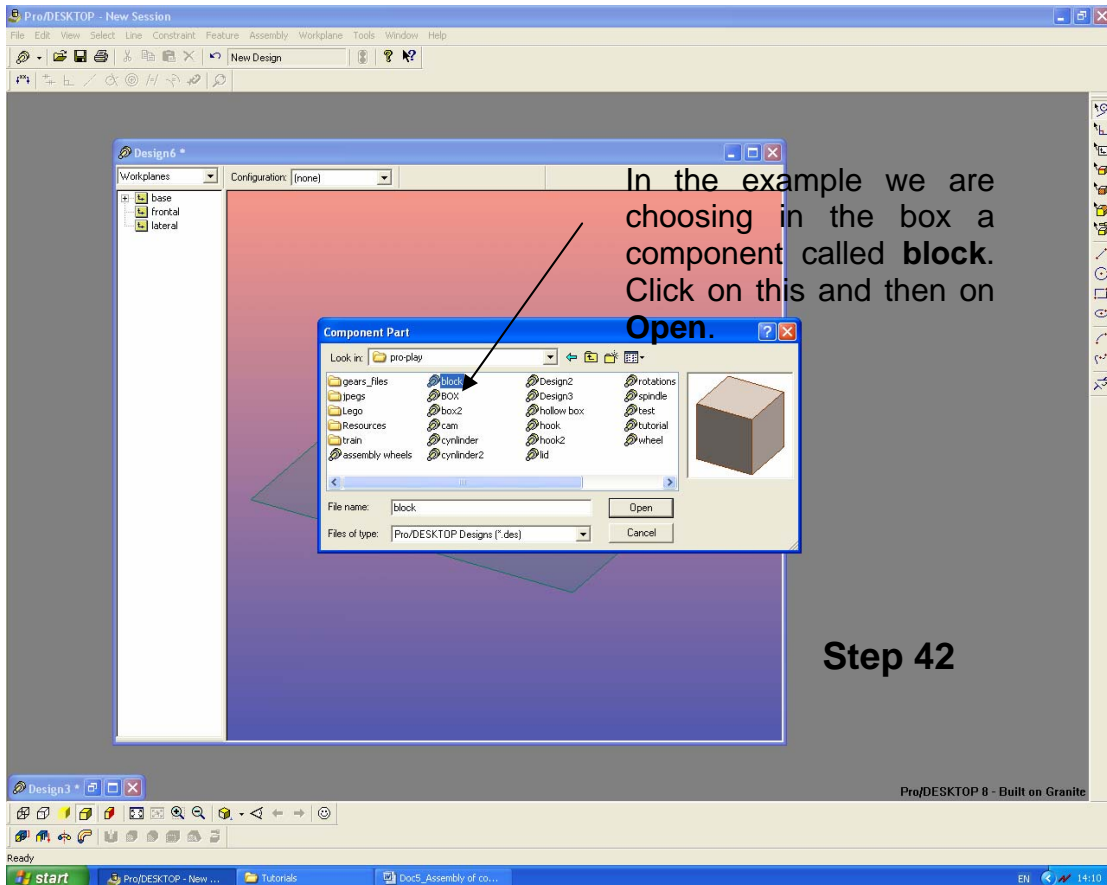
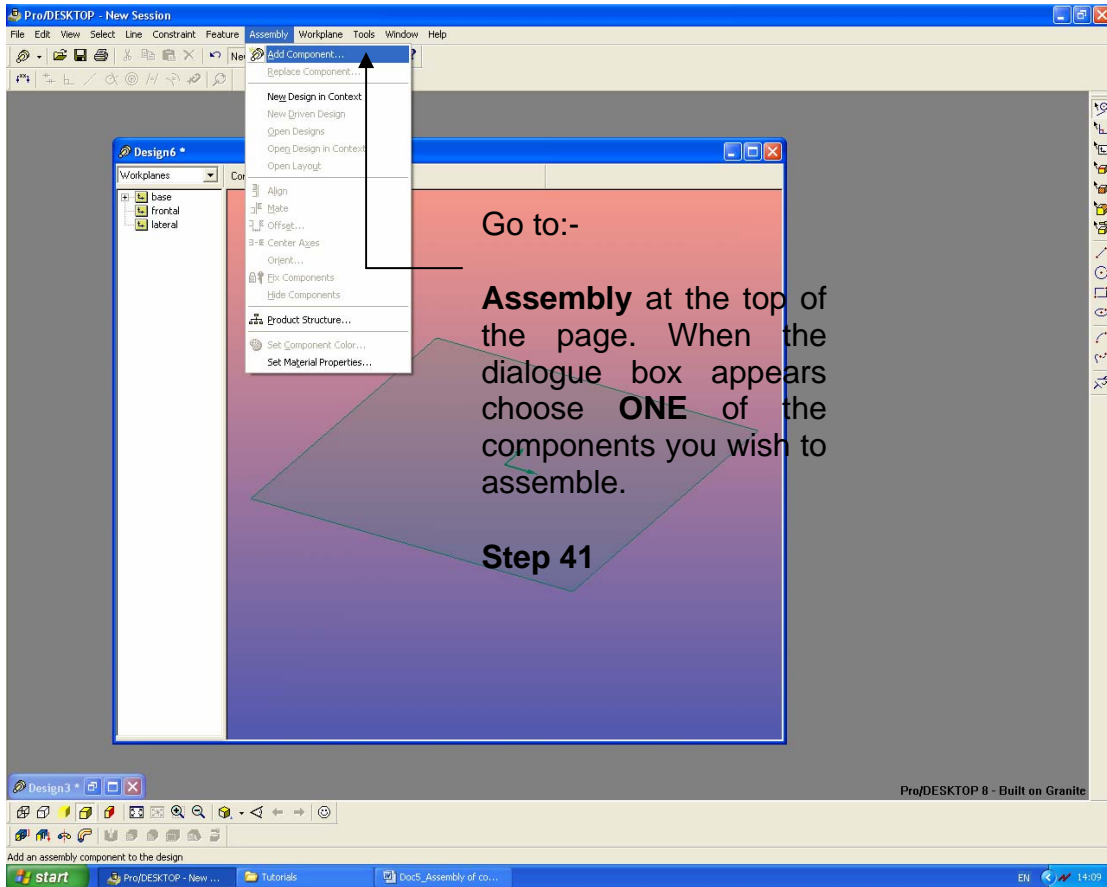
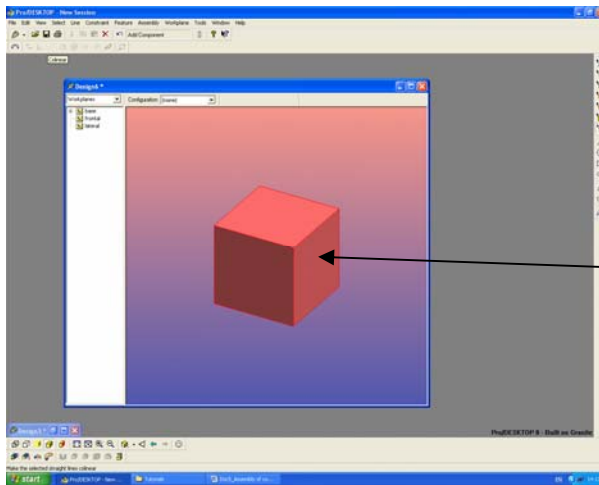


# Assembly of components



## Assembly of components



Once you have opened **Block** it appears like the screen opposite.

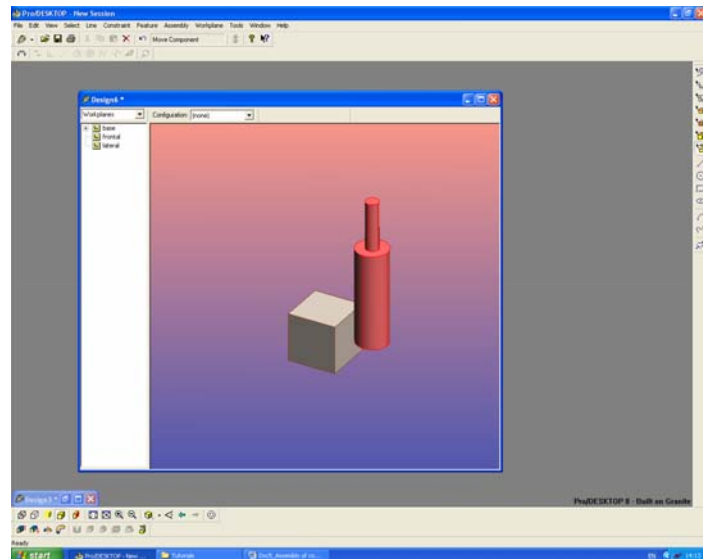
Component called **Block**

**Step 43**

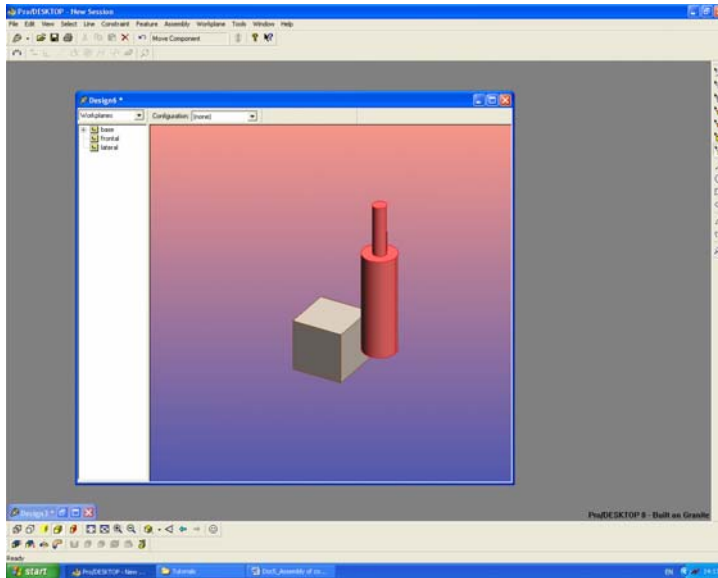
Repeat Steps 41 & 42 to bring in another component so you now have 2 components in your design.

Components **Block** and **Spindle** are now in this design.

**Step 44**



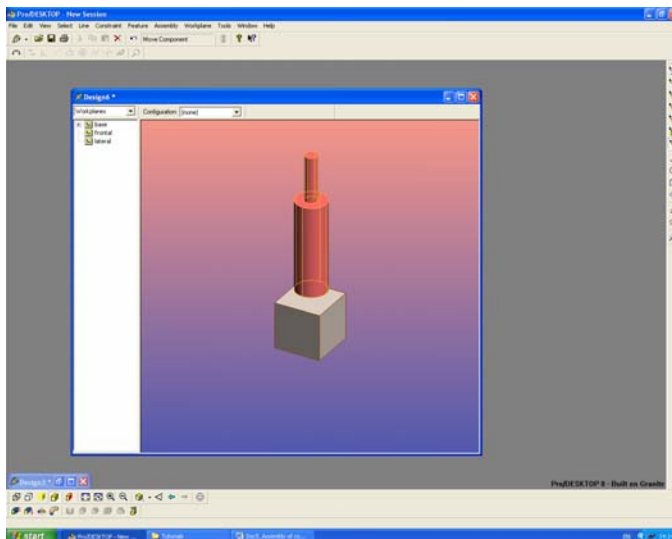
## Assembly of components



If you require to **move the components**

Go to the symbol:-  
**Select Parts** and then the component and click on it until it turns **Yellow**. With your left button of the mouse pressed down move the component to where you want it.

### Step 45



The components may look OK but they may **not** be in line **as well as** being below a surface or above it.

Try using your arrow keys on your keyboard to look at it from different directions.

You now need to go onto the next Tutorial which deals with **Mating & Aligning**

### Step 46

Go onto the next Tutorial which deals with **Mating & Aligning**