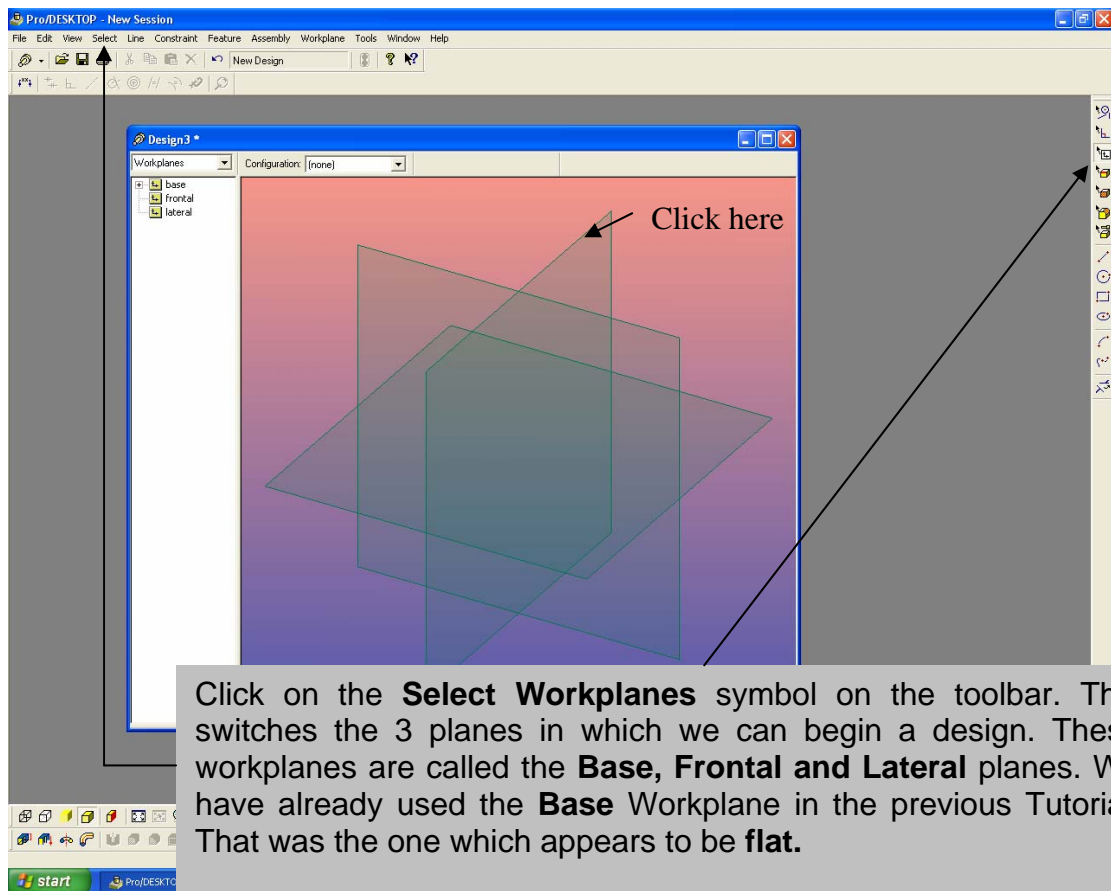
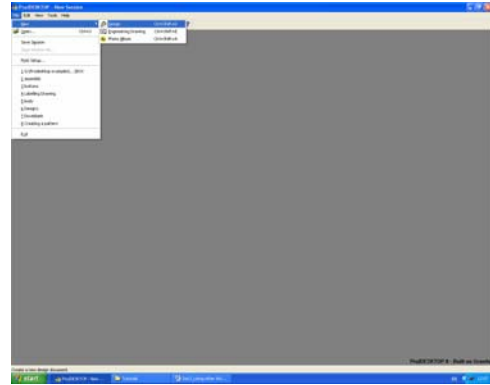


Using other Workplanes

Go to **File/New** and then **Design**

Step 21

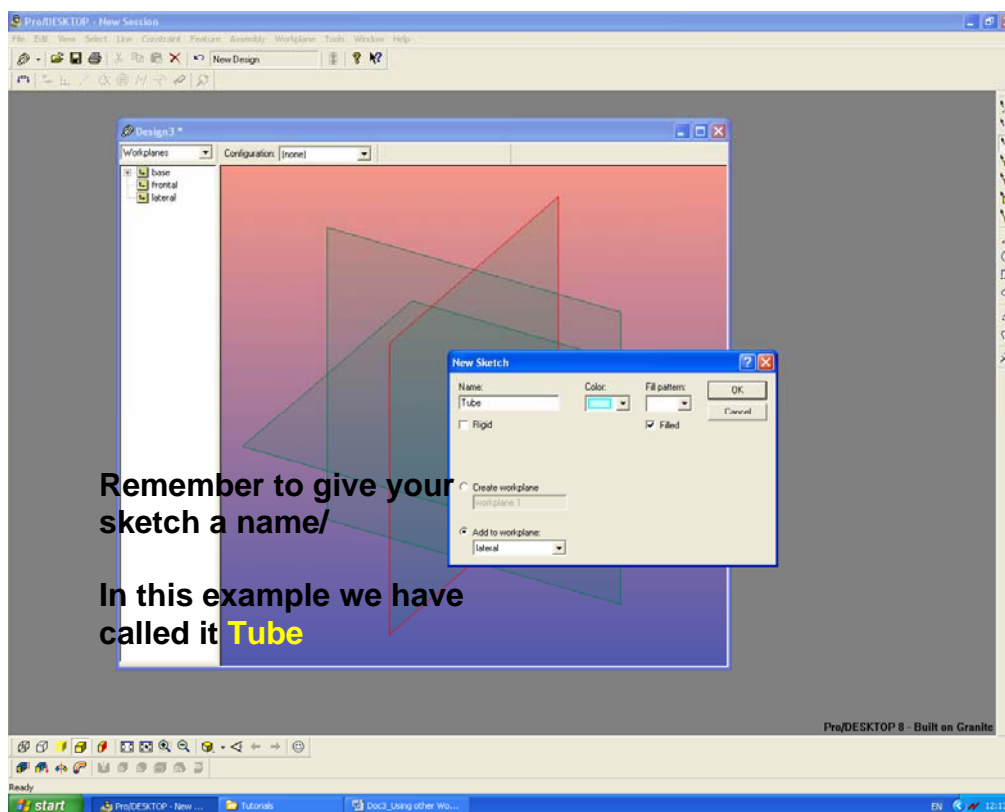
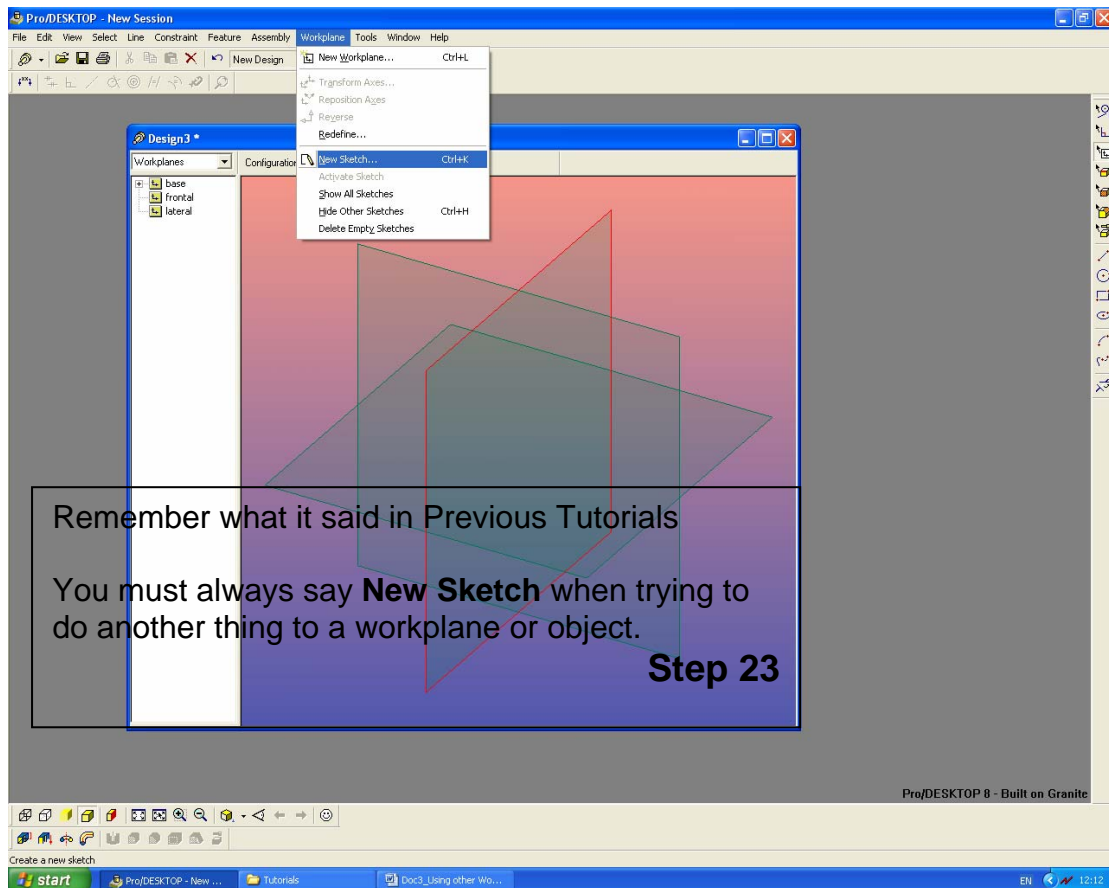


Click on the **Select Workplanes** symbol on the toolbar. This switches the 3 planes in which we can begin a design. These workplanes are called the **Base, Frontal and Lateral** planes. We have already used the **Base** Workplane in the previous Tutorial. That was the one which appears to be **flat**.

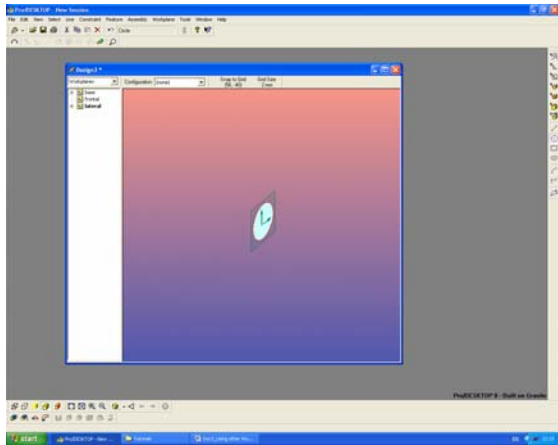
Click on the Workplane which appears to be facing left and right. It should turn **RED**

Step 22

Using other Workplanes



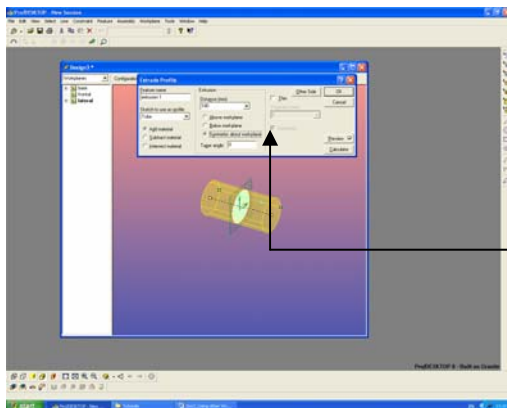
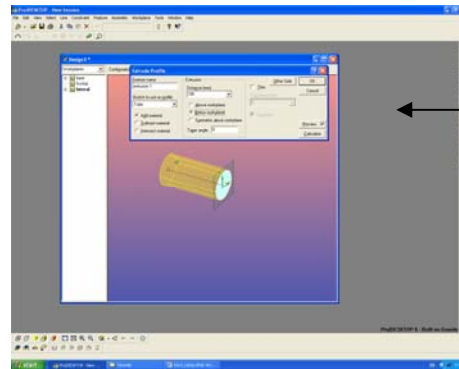
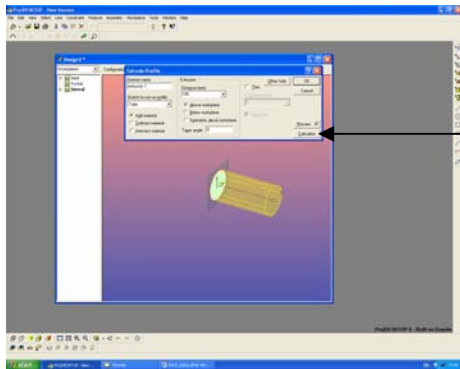
Using other Workplanes



Select **Circle** and then go to the workplane and draw your circle. It should go **RED** but if it does not go to **select lines** and then click on the line to make it **RED**

Remember whenever you do anything the lines need to be **RED** so its good to know how to choose a line.

Step 25



Extrude your Circle (look back in you Tutorials if not sure) You can Extrude 3 differing ways.

Above Workplane

Below Workplane

Symmetric about workplane

Step 26

Have a try at extruding in the 3 different ways you will see it happening as you change from **Above, Below and Symmetrical**.

Now go to Tutorial” Making a hollow Tube “