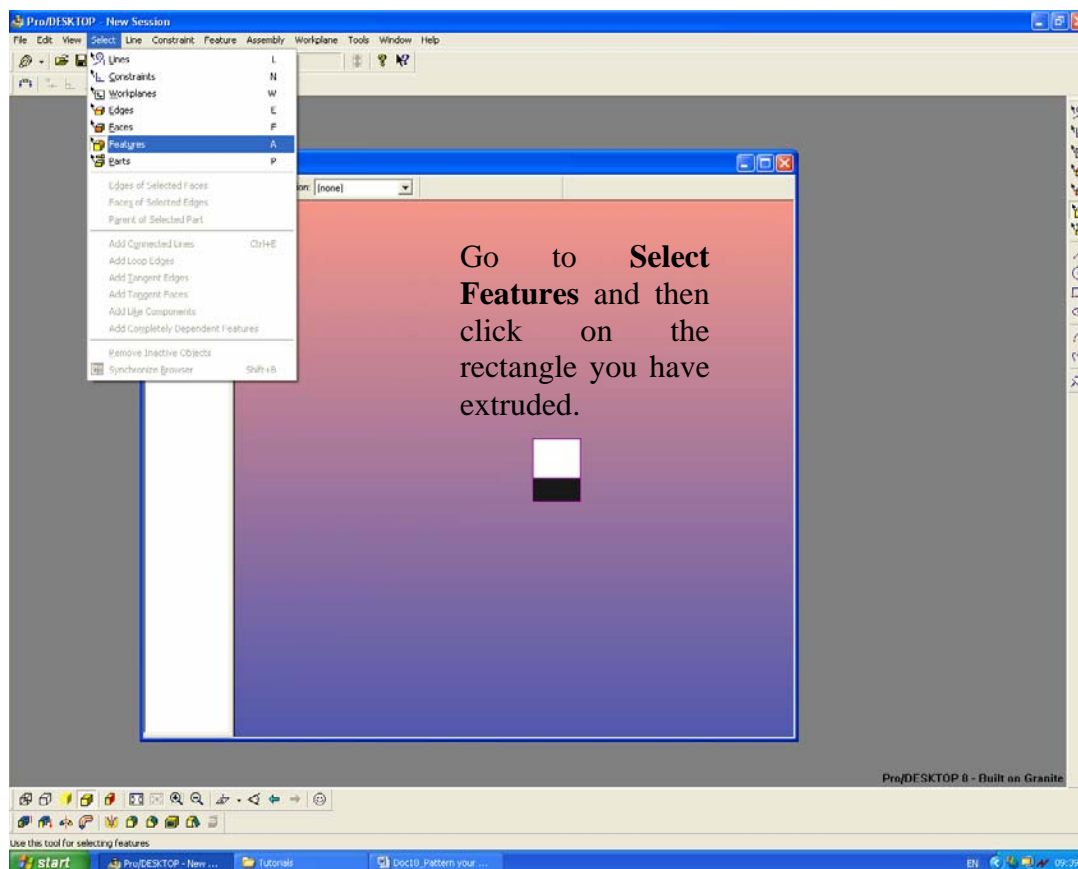
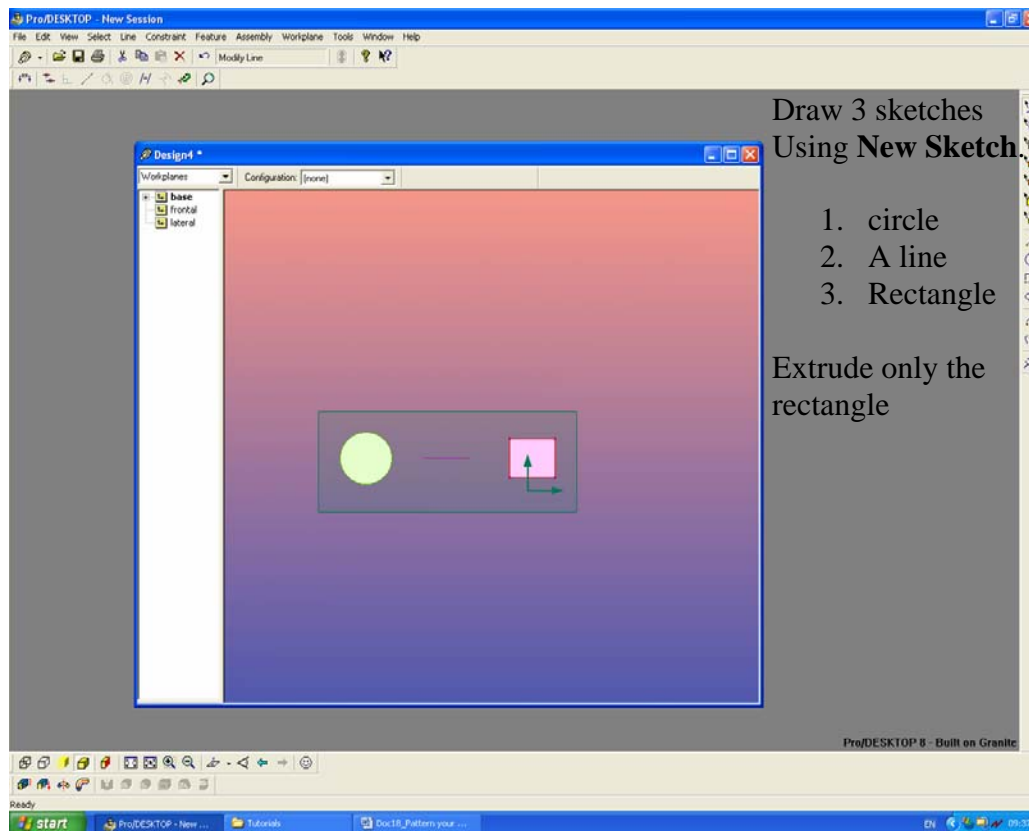
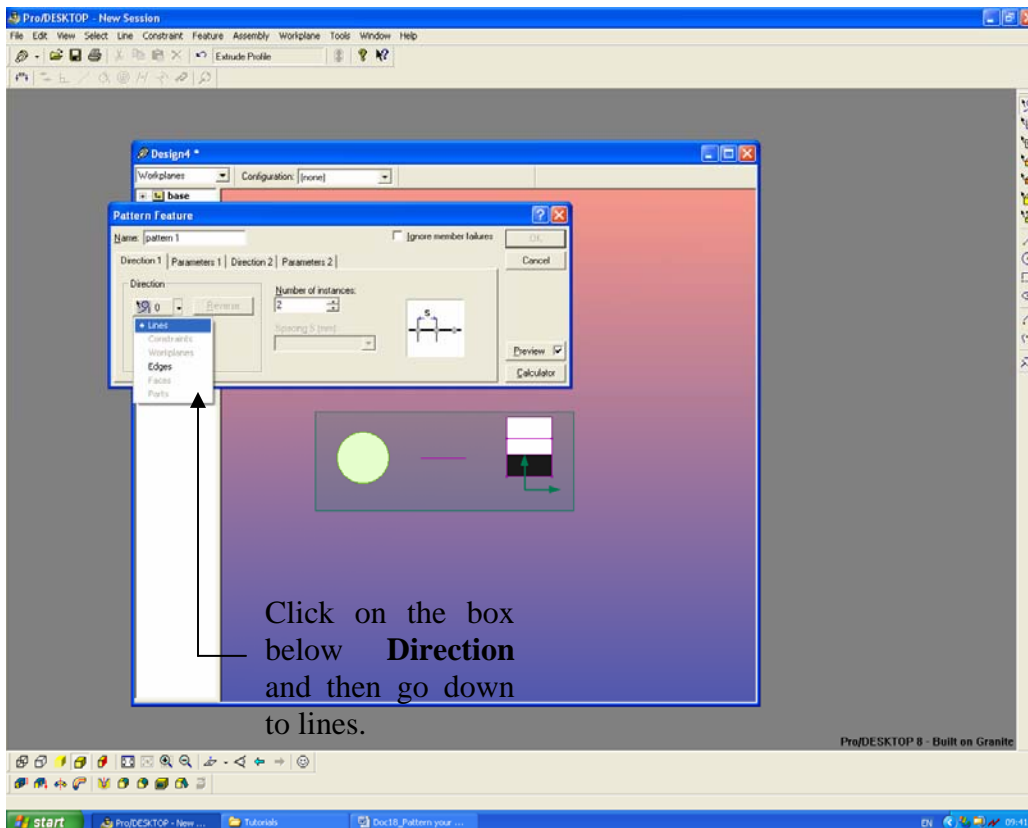
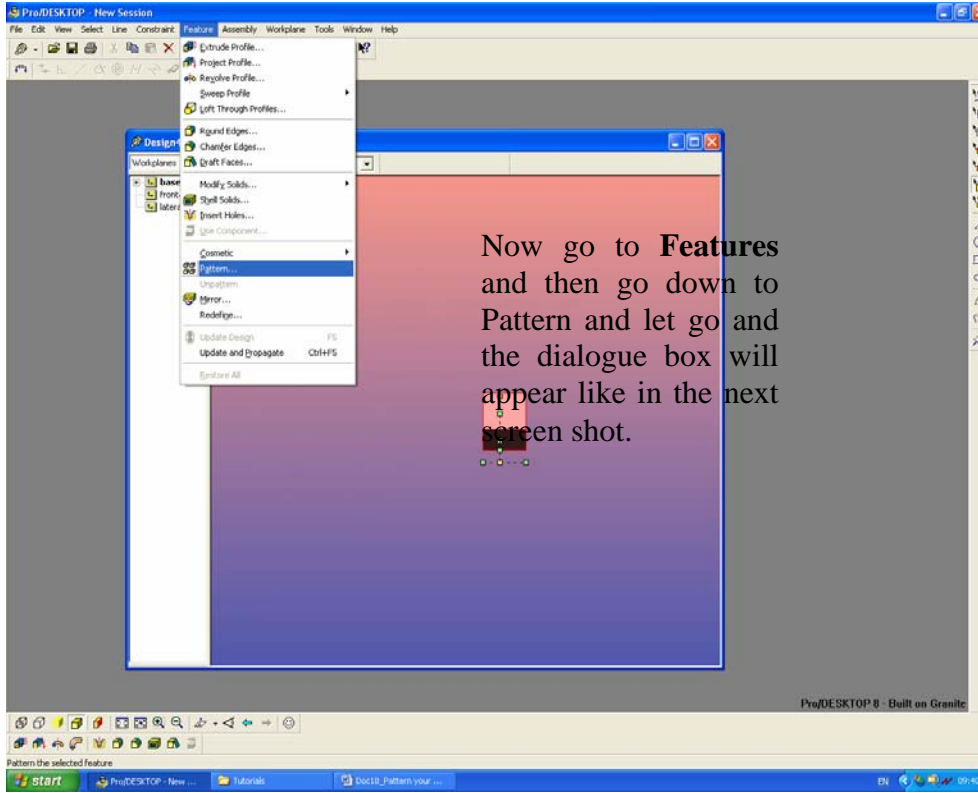


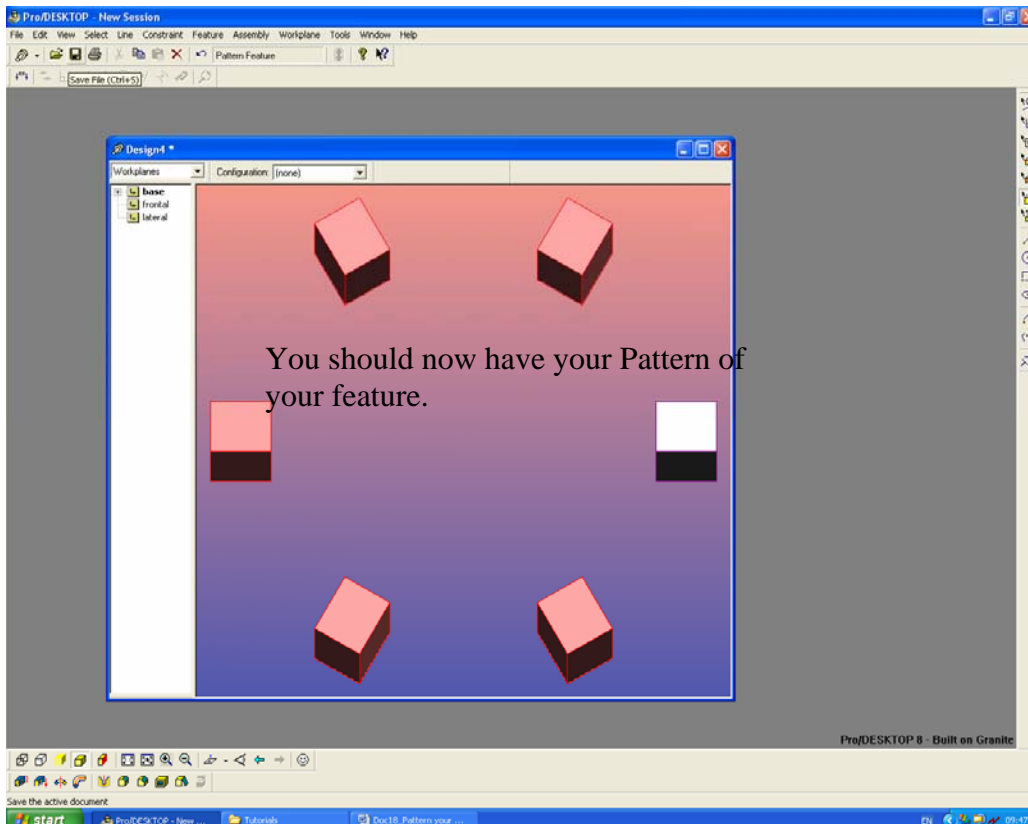
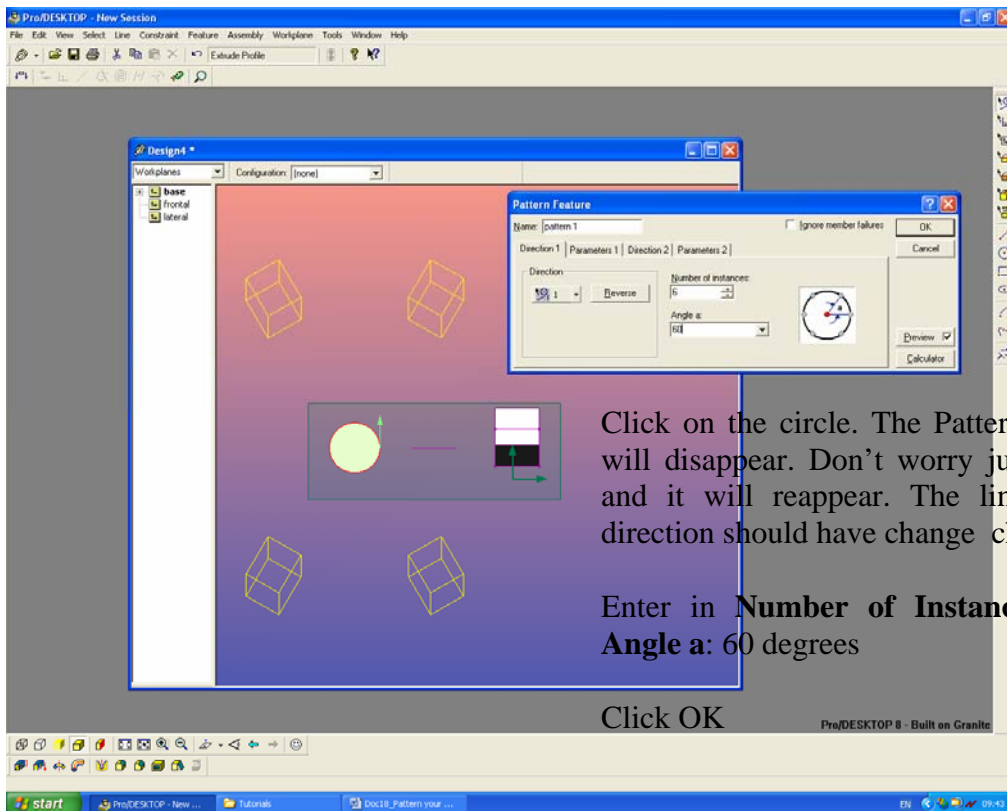
Pro-Desktop- Pattern



Pro-Desktop- Pattern



Pro-Desktop- Pattern



Pro-Desktop- Pattern

Now try the same exercise but this time rather than clicking on the **Circle** as your Direction click on the **line** you created at the beginning and see the results. Remember this can be applied to any shape so think of your shape carefully before Patterning

